

# Cheaptestinside

**Exam : VMWare VCP-310**

**Title : VMware Certified  
Professional on VI3  
[www.pass4side.net.cn](http://www.pass4side.net.cn)**

**[www.test4exam.cn](http://www.test4exam.cn)**

**Version : V5.25**

~~Crapsie~~ help you pass any IT exam!

## Important Note, Please Read Carefully

### Other Cheaptestinside products

[All Cheaptestinside IT Exam Products](#)

### Our products of Offline Testing Engine

Use the offline Testing engine product to practice the questions in an exam environment.

Build a foundation of knowledge which will be useful also after passing the exam.

[Cheaptestinside Testing Engine](#)

### Latest Version

We are constantly reviewing our products. New material is added and old material is revised. Free updates are available for 90 days after the purchase. You should check your member zone at Cheaptestinside and update 3-4 days before the scheduled exam date.

Here is the procedure to get the latest version:

1. Go to <http://www.Cheaptestinside.com>
2. Log in the **User Center**
3. The latest versions of all purchased products are downloadable from here. Just click the links.

### Feedback

If you spot a possible improvement then please let us know. We always interested in improving product quality.

Feedback should be send to sales(at)Cheaptestinside.com. You should include the following: Exam number, version, page number, question number, and your login Account.

Our experts will answer your mail promptly.

### Explanations

This product does not include explanations at the moment. If you are interested in providing explanations for this exam, please contact sales(at)Cheaptestinside.com.

# Cheapestinside

---

1. Which of the following files are part of a typical virtual machine?

- A. Virtual Disk File (.vmdk)
- B. Configuration File (.vmx)
- C. VMotion Transfer File (.vmt)
- D. Hardware File (.svr)
- E. BIOS File (.nvram)

**Answer:** ABE

2. Which of the following products are part of the VMware Infrastructure 3 software suite?

- A. VMware Virtual Desktop Manager
- B. VMware Distributed Resource Scheduler
- C. VMware Update Manager
- D. VMware Site Recovery Manager

**Answer:** BC

3. A company decides to explore virtualization options for one of their departments. Their environment and requirements are:

- (1) The users should be able to create their own virtual machines
- (2) The users are running Windows XP on their desktops.
- (3) Several virtual machines will be set up for each user and they should be able to run them all at the same time.
- (4) The users will use the software to edit memory settings after the virtual machine is installed.
- (5) Virtual machine performance and high availability are more important than keeping costs low.
- (6) These machines WILL be run in production and WILL be used or managed remotely.

What is the correct solution based on these criteria?

- A. give the users VMware VirtualCenter Client 2.x and grant them permission to create virtual machines on an ESX Server 3.x, with access to all necessary operating system ISOs
- B. give the users VMware Workstation 6.x and all necessary operating system CDs or ISOs
- C. give the users VMware Server 2.x and all necessary operating system CDs or ISOs
- D. give the users VMware Player 2.x and all necessary operating system CDs or ISOs

**Answer:** A

4. Which of the following is a benefit of ESX Server 3i over ESX Server? A.

- A. Increased Security and Reliability
- B. Memory Overcommitment
- C. Improved Fault Isolation
- D. Dynamic Resource Allocation

**Answer:** A

5. How does ESX Server 3.x differ from VMware Server?

- A. ESX Server 3.x supports 64-bit guest operating systems and VMware Server 2.x does not.
- B. ESX Server 3.x supports VMware VirtualCenter and VMware Server 2.x does not.
- C. ESX Server 3.x supports Intel Virtualization Technology (VT) and VMware Server 2.x does not.
- D. ESX Server 3.x supports 4 processor Virtual SMP and VMware Server 2.x does not.

**Answer: D**

6. How does VMware Server 2 differ from ESX Server 3.5?

- A. VMware Server 2 supports legacy operating systems and ESX Server 3.5 does not.
- B. VMware Server 2 enhances software development and testing and ESX Server 3.5 does not.
- C. VMware Server 2 runs on a Linux host and ESX Server 3.5 does not.
- D. VMware Server 2 supports up to 128 GB of RAM and ESX Server 3.5 does not.

**Answer: C**

7. How does ESX Server 3.5 differ from VMware Server 2?

- A. ESX Server 3.5 supports virtual machine clusters on the host server and VMware Server 2 does not.
- B. ESX Server 3.5 accesses SAN storage and VMware Server 2 does not.
- C. ESX Server 3.5 supports up to 128 GB of RAM and VMware Server 2 does not.
- D. ESX Server 3.5 deploys a virtual machine from a template and VMware Server 2 does not.

**Answer: D**

8. What are two reasons why a company would choose to use ESX Server 3.x instead of using VMware Server 2? (Choose Two)

- A. The company needs the ability to run dual-processor virtual machines.
- B. VMware Server 2 does not support running virtual machines in a production environment. C. The company wants the ability to use VMotion.
- D. ESX Server 3.x offers better resource management and better performance.

**Answer: CD**

9. Which of the following are required for installing VMware Consolidated Backup? (Choose Two)

- A. the server must be a physical machine
- B. the operating system must be Windows
- C. the server can be a physical or a virtual machine
- D. the operating system can be Windows or Linux

**Answer: BC**

10. Which statement is true about VCB proxy?

- A. It must be set to assign Windows drive letters to prevent data corruption.
- B. It must be set to prevent assignment of Windows drive letters to prevent data corruption.
- C. When running under Linux, it has no concept of Windows drive letter mappings.

D. It assigns Windows drive letters to Raw Device Mapped LUNs that are assigned to Windows virtual machines.

**Answer: B**

11. What are two characteristics of VMware Consolidated Backup? (Choose Two) A.

LAN-free backups of virtual machines can be performed

B. A plugin integrates the VCB UI into VirtualCenter

C. Image-level backups of virtual machines can be performed

D. File-level backups of Windows and Linux virtual machines can be performed

**Answer: AC**

12. What is the advantage of installing backup client software in a Linux virtual machine's guest OS?

A. This configuration enables immediate booting from a restored virtual machine. B.

This configuration enables LAN-free backup.

C. This configuration enables ESX Server to do backup and restore operations.

D. This configuration enables individual files to be selected for backup or restore.

**Answer: D**

13. What are two advantages of VCB over conventional agent-based methods of backing up a virtual machine's (VM's) data? (Choose Two)

A. helps to eliminate the need for a backup window by using an online, snapshot-based backup

B. makes it possible to do both file-based and full-system backup of the same VM simultaneously

C. enables LAN-free backup and avoids undue overloading of the datacenter network

D. allows selection of files and directories from the guest file system of any VM

**Answer: AC**

14. For a cluster with two ESX hosts, one using Intel processors and other using AMD processors, which of the following statements is true? (Choose Two)

A. VMotion can move live VMs from one host to another

B. VMware DRS can load balance live VMs among hosts

C. Storage VMotion can move a virtual machine disk file from one storage device to another

D. VMware HA can failover VMS from one host to another in case of a host failure

**Answer: CD**

15. In configuring a VMware HA Cluster the System Administrator can configure Admission Control. There are two options: Do not power on Virtual Machines if they violate availability constraints, or Allow Virtual Machines to be powered on even if they violate availability constraints. If

the System Administrator chooses the option "Do not power on Virtual Machines if they violate availability constraints" then which of the following apply? (Choose Two)

A. VMware HA enforces the failover capacity defined for the cluster.

# Cheapestinside

---

- B. Only Virtual Machines with a high restart priority will be restarted on surviving ESX hosts.
- C. VMware HA restarts VM's on surviving host with the most unreserved capacity.
- D. Virtual Machines running on failed ESX hosts will not be restarted on surviving ESX hosts.

**Answer: AC**

16. Which of the following situations will result in VMware HA restarting virtual machines? (Choose Two)

- A. An ESX Server in the cluster becomes isolated from the network.
- B. A guest OS is manually powered off.
- C. A guest OS fails.
- D. An ESX Server in the cluster is put into Maintenance mode.

**Answer: AC**

17. Which of the following conditions can prevent a virtual machine (VM) that is part of a VMware HA cluster from being powered on? (Choose Two)

- A. Guaranteed admission control cannot allocate sufficient CPU reservation for the VM.
- B. The VM has been configured with a virtual disk on local storage.
- C. Strict admission control is configured and insufficient resources are available for the VM.
- D. There is a mismatch in CPU capabilities between one or more HA cluster nodes.

**Answer: BC**

18. An ESX Administrator is configuring a VMware High Availability Cluster for three hosts and their resident VMs. The HA cluster will be configured to support a single host failure and resource considerations must be enforced during a failover event. To accomplish this task:

- A. Each host in the cluster must be able to accommodate the VM with the highest CPU limit value
- B. There must be enough cluster resources based on memory and CPU reservations to account for any potential host failure
- C. Each host in the cluster must be able to accommodate the VM with the largest configured available memory
- D. All potential remaining hosts during a failure event must be able to accommodate the sum total of all VMs' available memory configurations

**Answer: B**

19. Which two conditions can cause a combined VMware DRS/HA cluster to change to a red status?

(Choose Two)

- A. The current failover capacity is smaller than the configured capacity.
- B. All the primary hosts in the cluster are not responding.
- C. A DRS-only host has been added to an HA cluster.
- D. DRS is in the process of balancing resources among hosts in the cluster when an HA event occurs.

**Answer: AB**

---





20. Which of the following are requirements for a VMware HA cluster? (Choose Two)

- A. a private Ethernet network for all hosts
- B. access to shared storage from all hosts
- C. access to the virtual machine networks from all hosts
- D. identical type and quantity of CPUs in each host

**Answer:** BC

21. VirtualCenter Server is running within a virtual machine (VM) that is part of a VMware HA and DRS cluster. The VirtualCenter VM can migrate between all hosts in the cluster by using VMotion. DRS is configured for partial automation.

What happens if the ESX host that is currently running the VirtualCenter VM experiences a power outage?

- A. All DRS cluster operations will be unavailable until the ESX host is brought back online.
- B. VirtualCenter will stay offline, but all virtual machines on the remaining hosts will continue without interruption.
- C. VMware HA will restart the VirtualCenter VM on another host.
- D. This situation cannot occur because VirtualCenter cannot be installed on a VMware HA cluster.

**Answer:** C

22. Which of the following is a key feature of VMware High Availability services?

- A. HA can take the place of other cluster software, like Microsoft Cluster Services (MSCS)
- B. HA can automatically restart failed ESX Servers
- C. HA can VMotion Virtual Machines to surviving ESX Servers
- D. HA can automatically restart Virtual Machines from a failed ESX Server

**Answer:** D

23. How many LUNs does ESX Server 3.x support access to during the initial installation process?

- A. 128
- B. 64
- C. 32
- D. 256

**Answer:** A

24. ESX 3.5 Server supports access to how many fibre channel LUNs after the initial installation process?

- A. 256
- B. 128
- C. 64
- D. 32

**Answer:** A

25. A company plans to implement an ESX 3.x / VirtualCenter 2.x infrastructure that includes the following:

- (1) Three ESX Server host machines with four physical dual-core processors
- (2) The ability to migrate running virtual machines (VMs) between these hosts without taking them offline
- (3) Multiple processor support for certain applications

What licensing is necessary to support these requirements?

- A. 1 VirtualCenter Server license, a 12-processor VMotion license, and a 12-processor ESX Server license
- B. 1 VirtualCenter Server license, 1 VMotion license, and an ESX Server license for each virtual processor for each running VM
- C. 3 VirtualCenter Server licenses, 3 VMotion licenses, and 3 ESX Server licenses
- D. 1 VirtualCenter Server license, a 24-processor VMotion license, and a 24-processor ESX Server license

**Answer: A**

26. Which three storage solutions are supported for the placement of a VMFS filesystem during the installation of the ESX Server? (Choose Three)

- A. SCSI RAID
- B. ATA RAID
- C. SAN
- D. ATA
- E. SCSI

**Answer: ACE**

27. During the installation of ESX Server, you decide to define the partitioning scheme manually.

What are two recommended minimum partition sizes? (Choose Two)

- A. swap = 544 MB
- B. /boot = 512 MB
- C. / = 5 GB
- D. /usr = 2048 MB

**Answer: AC**

28. During the installation of ESX Server, you decide to manually define the partitioning scheme. Which of the following are recommended minimum partition sizes? (Choose Two)

- A. / = 1024 MB
- B. swap = 544 MB
- C. /boot = 100 MB
- D. /usr = 2048 MB

**Answer: BC**

29. The maximum number of hosts in a VMware HA cluster is:

- A. 24
- B. 16

- C. 8
- D. 32

**Answer: D**

30. When planning an ESX Server deployment, which of the following accurately describes the maximum configuration for the physical server?

- A. 32 CPU cores and 128GB of memory per physical server
- B. 32 CPU cores and 256GB of memory per physical server
- C. 64 CPU cores and 256GB of memory per physical server
- D. 16 CPU cores and 128GB of memory per physical server

**Answer: B**

31. A company wants to increase disk capacity for their ESX Server environment. Management mandates that:

- (1) VMotion must work in this environment
- (2) the existing LAN infrastructure must be used
- (3) the storage must support VMFS volumes

Which storage option would best meet the company's objective?

- A. NFS
- B. iSCSI
- C. Fibre Channel
- D. SMB

**Answer: B**

32. Which of the following can be used to configure an ESX 3 server with a hardware iSCSI initiator?

- A. Intel E1000 nic
- B. Intel E100 nic
- C. QLogic QLA4050 card
- D. Brocade 2110 card

**Answer: C**

33. Which three statements are true about shared storage capabilities on NFS volumes supported by ESX Server? (Choose Three)

- A. You can configure ESX Server to boot from NFS mounted volumes.
- B. You can create virtual machines on NFS mounted volumes.
- C. You can use VMotion.
- D. You can create VMFS datastores on NFS mounted volumes.
- E. You can boot virtual machines stored on NFS mounted volumes.

**Answer: BCE**

34. What is the maximum number of extents for a VMFS3 volume?

- A. 32
- B. 128
- C. 256
- D. 64

**Answer: A**

35. An ESX Administrator plans to install additional supported components on the ESX Server that would increase the memory requirements for the Service Console. Which ESX Server partition would also need to be increased during installation as a result?

- A. /
- B. /boot
- C. vmfs3
- D. swap

**Answer: D**

36. Which of the following tasks can be selected from an ESX Server's home page?(Choose Three)

- A. Download VMware Virtual Desktop Manager
- B. Log in to Web Access
- C. Download VMware VirtualCenter Server
- D. Browse Datastores in this host's inventory
- E. Browse Virtual Machines in this host's inventory

**Answer: BCD**

37. An ESX Administrator is troubleshooting an ESX Server and needs to export diagnostic information. The ESX Server is not connected to VirtualCenter. How can the information be gathered using the VI Client?

- A. Click, File, Export and Export Diagnostic Data, select a location and click OK.
- B. The VI Client can only be used to export diagnostic data from an ESX Server attached to VirtualCenter.
- C. From the Administration Drop-Down Menu, select Export Diagnostic Data, select a location and click OK.
- D. Click the Administration Button, select System Logs, then click the Export Events button. Select the ESX Server and click OK.

**Answer: A**

38. The remote console performance for a virtual machine on an ESX Server appears to be degraded. Which of the following could be a possible cause of the problem?

- A. The physical NIC assigned to the virtual machine port group containing the affected virtual machine has a speed or duplex mismatch.
- B. To conserve memory, the ESX Server has initiated Transparent Page Sharing.

- C. The virtual NIC assigned to the virtual machine has a speed or duplex mismatch.
- D. The virtual machine has an IP address conflict.

**Answer: A**

39. If a virtual machine (VM) experiences a monitor panic, where does the ESX Server core dump file get created?

- A. in the local VMFS volume
- B. in the /home partition
- C. in the same directory as the VM's .vmx file
- D. in the core dump partition, if created

**Answer: C**

40. If an ESX Server has both local and shared storage, which three partitions are required to reside on local storage? (Choose Three)

- A. /boot
- B. /usr
- C. /
- D. swap
- E. VMFS

**Answer: ACD**

41. A system administrator configures an ESX Server 3.5 system to boot from iSCSI SAN. Which technology is NOT supported when booting from iSCSI SAN?

- A. VCB
- B. MSCS
- C. RDM
- D. DRS

**Answer: B**

42. Which two are requirements when booting from SAN? (Choose Two)

- A. Boot LUN must have an ID of 1.
- B. The boot LUN should only be visible to the ESX Server that is booting from it.
- C. The boot LUN should be visible to all ESX Servers for HA failover.
- D. The BIOS for the HBA must be enabled and correctly configured.

**Answer: BD**

43. What is a valid reason for choosing to boot from local storage rather than choosing to boot from SAN?

- A. There is no way to restrict sharing of boot LUNs between ESX Servers on boot from SAN.
- B. VMotion is not supported on boot from SAN.
- C. RDM is not supported on boot from SAN.

D. MSCS is not supported on boot from SAN.

**Answer: D**

44. While performing a clean installation of ESX Server, the following partitions were created using the advanced partitioning option:

/boot = 100 MB

swap = 600 MB

/home = 2000 MB

/vmimages = 10000 MB

/var/log = 1500 MB

VMFS = use all available free space

You receive an error message and cannot continue.

What is causing the error?

- A. /home needs to reside on the SAN.
- B. The /boot partition is too small.
- C. The / partition is missing.
- D. ESX 3.x no longer requires a swap partition.

**Answer: C**

45. While performing a clean installation of ESX Server, the following partitions were created using the advanced partitioning option: / = 100 MB /boot = 100 MB swap = 600 MB /home = 2000 MB /vmimages = 10000 MB /var/log = 1500 MB VMFS = use all available free space You receive an error message and cannot continue. What is causing the error?

- A. The /boot partition is too small.
- B. ESX 3.0 no longer requires a swap partition.
- C. /home needs to reside on the SAN.
- D. The root partition is too small.

**Answer: D**

46. When configuring multiple service console connections, which of the following is true?

- A. The service console connections must be attached to different vmnics
- B. The service console connections must be configured on different virtual switches
- C. The service console connection must be configured on different networks
- D. The service console connections must be configured on the same virtual switch

**Answer: C**

47. What is the maximum number of Service Console ports that can be created on an ESX 3.x Server?

- A. 1
- B. 2

C. 4

D. 16

**Answer: D**

48. Which of the following describes the default behavior of uplinks added to a virtual switch:

A. All uplinks are active

B. Only one uplink can be attached to a virtual switch

C. The first uplink is active, additional uplinks are unused

D. The first uplink is active, additional uplinks are standby

**Answer: A**

49. When traffic shaping is enabled, network traffic of a virtual machine is \_\_\_\_\_.

A. limited to peak bandwidth if the network is congested

B. maintained at average bandwidth

C. limited to spare bandwidth

D. always limited to peak bandwidth

**Answer: D**

50. What are the three available virtual switch connection types? (Choose Three) A.

service console

B. internal only

C. VMkernel

D. virtual machine

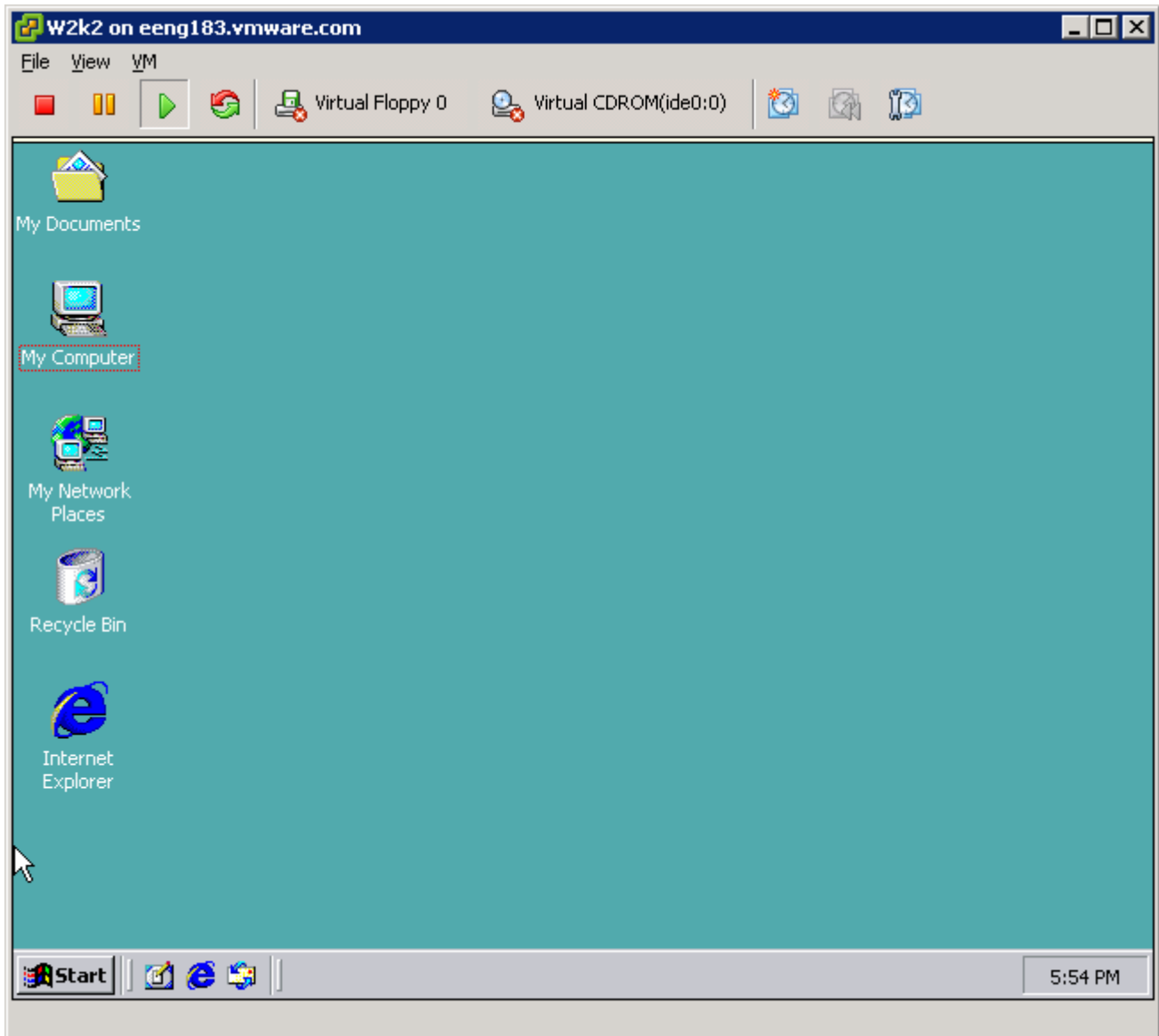
E. vswif0

**Answer: ACD**

51. Click the Exhibit button.







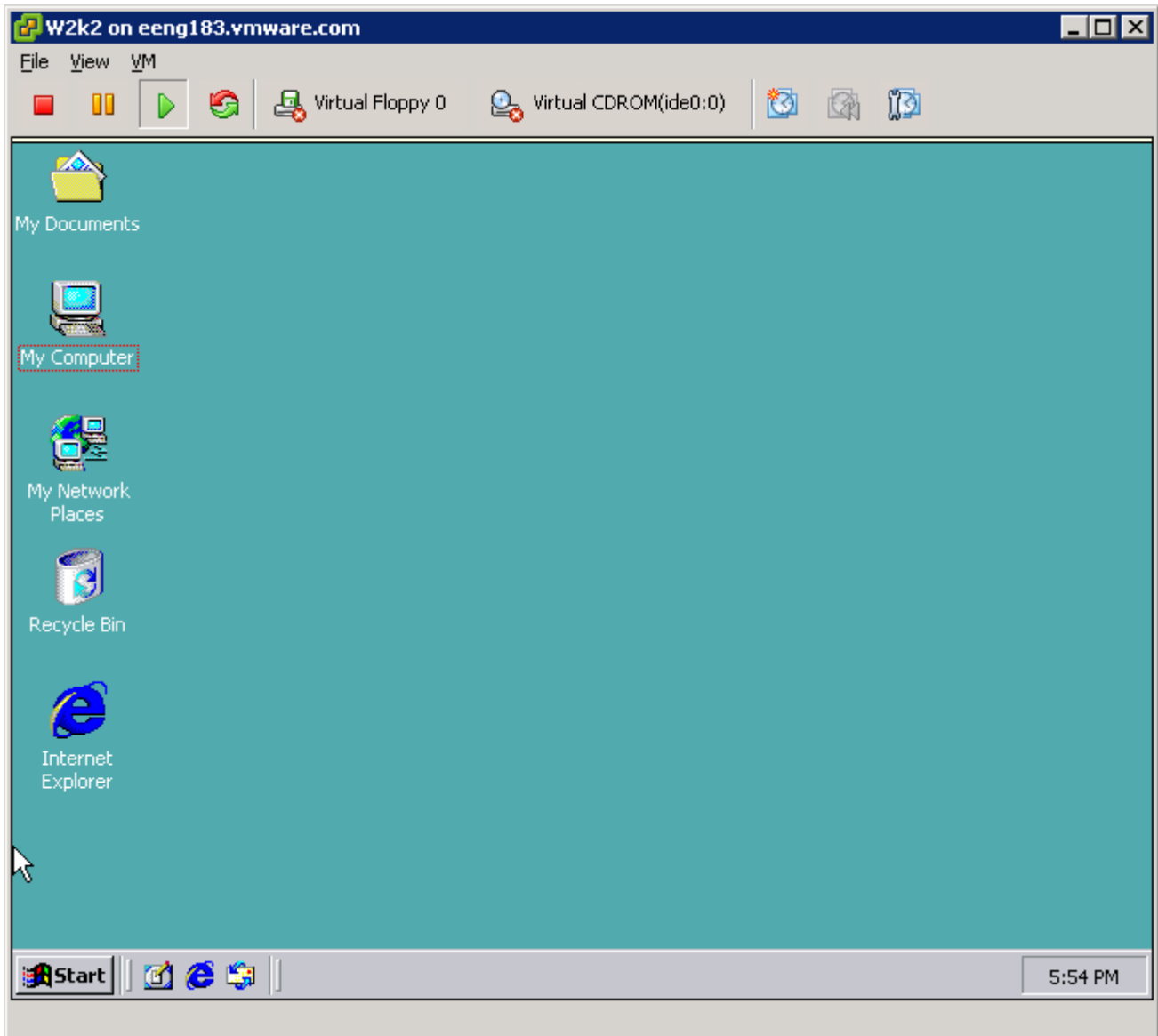
Which of the following steps would improve the network performance of this virtual machine (VM)?

- A. Increase memory to the virtual machine
- B. Traffic shape this virtual machine
- C. Add an additional uplink to the virtual switch the virtual machine is attached to
- D. Adjust shares for the virtual NIC on the virtual machine

**Answer: C**

52. Click the Exhibit button.

# Cheapestinside



Which statement is true about the network performance of the virtual machine (VM) shown in the exhibit?

A. Virtual Switch autonegotiation settings need to be adjusted to improve performance. B.

The VM can send at the maximum of 10 Mbps.

C. The VM can send traffic as fast as the underlying physical NIC.

D. The underlying physical NIC is configured for 100 Mbps/half-duplex.

**Answer: C**

53. Which of the following statements best describe network traffic shaping (Choose Two)?

A. Network traffic shaping can limit outbound average bandwidth

B. Network traffic shaping can limit outbound peak bandwidth

C. Network traffic shaping can limit inbound peak bandwidth

D. Network traffic shaping can limit inbound average bandwidth

**Answer: AB**

54. Suppose you have 65 Virtual Machines configured on a single ESX Server. You want to provide

outbound connectivity for all of them. What is the minimum number of virtual switches you would need to support this configuration?

- A. 2
- B. 3
- C. 1
- D. 4

**Answer: C**

55. What methodology does ESX Server use for the implementation of VLANs? A.

MAC-based policies

B. protocol-based policies

C. bonds

D. port group policies

**Answer: D**

56. What is necessary to connect a running virtual machine to a newly created vSwitch VLAN inside an ESX Server?

A. install the appropriate VLAN tagging software inside the virtual machine

B. connect to the newly created VLAN using the VI Client

C. install the proper network device inside the virtual machine

D. power off the virtual machine, connect it to the newly created VLAN, and power it back on again using the VI Client

**Answer: B**

57. Which is an important benefit provided by VLANs?

A. improved security

B. higher tolerance to broken physical hardware

C. higher network availability

D. improved memory access

**Answer: A**

58. When configuring vswitch NIC teaming policy, what happens when the "Notify Switches" option is set to yes?

A. The physical switch is notified when a virtual NIC location changes.

B. The virtual switch is notified when the physical NIC link state changes. C.

The physical switch is notified when the virtual NIC link state changes. D.

The virtual switch is notified when a virtual NIC location changes. **Answer:**

A

59. Which three are valid network load balancing policies? (Choose Three)

- A. route based on destination MAC hash
- B. route based on explicit failover order
- C. route based on the originating virtual port ID
- D. route based on source and destination MAC hash
- E. route based on source and destination IP hash

**Answer:** BCE

60. Which two statements are true about port groups and VLANs? (Choose Two)

- A. Multiple VLANs can be specified in a port group. B.
- Multiple port groups can specify the same VLAN.
- C. The same VLAN cannot be specified in multiple port groups.
- D. Only one VLAN can be specified in a port group.

**Answer:** BD

61. What is a requirement for enabling NIC teaming?

- A. All virtual NICs must be of the same type.
- B. All physical NICs must be of the same type.
- C. Multiple physical NICs are linked to a single virtual switch
- D. A physical NIC is linked to multiple virtual switches **Answer:**

C

62. What are the three configurable security policy exceptions for a virtual switch? (Choose Three)

- A. traffic shaping
- B. promiscuous mode
- C. forged transmits
- D. MAC address changes
- E. Spanning Tree Protocol

**Answer:** BCD

63. If 0 is selected for the VLAN ID of a port group, or the VLAN ID is left blank, the port group can see \_\_\_\_\_.

- A. 802.1Q tagged traffic
- B. 802.3 untagged traffic
- C. 802.11 tagged traffic D.

802.3ad traffic **Answer:**

B

64. How is storage multi-pathing configured between an ESX Server and a supported storage array?

- A. Your array vendor must provide you with an agent to be installed in each Guest OS.
- B. Your storage array vendor must provide you a multi-pathing driver for ESX Server and an agent to be

installed in each Guest OS.

- C. Your storage array vendor must provide you with a multi-pathing driver for ESX Server.
- D. The multi-pathing driver is provided with ESX Server and is compatible with any supported storage array.

**Answer: D**

65. How are new LUNs discovered by ESX Server?

- A. ESX Server automatically detects new LUNs as they are presented. B. A reboot operation is required to detect newly presented LUNs.
- C. A rescan operation is required every time a new LUN is added.
- D. ESX Server periodically performs a rescan operation to detect any new LUNs.

**Answer: C**

66. Effective with ESX Server v3.5, which of the following was added to multi-pathing intelligence?

- A. Least Busy was added as a multi-pathing option
- B. Round Robin was added as a multi-pathing option
- C. Dynamic Workload Balancing was added to existing multi-pathing options
- D. Least I/Os was added as a multi-pathing option

**Answer: B**

67. How is Round Robin multi-pathing implemented in ESX Server?

- A. Paths are analyzed and the path with the lowest utilization is selected.
- B. Path switching occurs after a user defined number of I/O blocks has been issued.
- C. Paths are analyzed and the path with the smallest number of I/O blocks is selected. D. Path switching occurs after every 1000 blocks of I/O.

**Answer: B**

68. How many paths to a LUN can be simultaneously used when Round Robin multi-pathing is enabled?

- A. Round Robin will use only one path to send I/O.
- B. Round Robin can use up to 2 paths simultaneously to send I/O. C. Round Robin can use up to 4 paths simultaneously to send I/O.
- D. Round Robin can be set to use additional paths simultaneously for every 1000 blocks of I/O transmitted.

**Answer: A**

69. What are two functions of zoning in SAN Fibre Switches? (Choose Two) A.

- A. provides Name Resolution Service on the SAN
- B. prevents/allows access to a given LUN
- C. isolates traffic of a given zone from the other zones
- D. prevents/allows access to a given storage array

**Answer: CD**

70. To prevent non-ESX Servers from seeing VMFS datastores, where should LUN masking be configured?

- A. on the Fibre Switch
- B. on the storage array
- C. on the Ethernet Switch
- D. on the host

**Answer: B**

71. What are the three possible storage multipathing policies that you can set in ESX Server 3.5? (Choose Three)

- A. Round Robin
- B. Fixed
- C. Open Shortest Path First (OSPF)
- D. Persistent Binding
- E. Most Recently Used (MRU)

**Answer: ABE**

72. A new LUN has been requested for an ESX Server. The SAN Administrator creates LUN 6 and presents the LUN to the ESX Server.

What is the first step that must be performed on the ESX Server before you can start using the new LUN?

- A. format the LUN with VMFS3 File system
- B. perform a Rescan operation
- C. create a partition on the new LUN
- D. reboot the ESX Server to see the new LUN

**Answer: B**

73. A request has been made to the SAN Administrator to provision a new LUN. A LUN (LUN 6) is created and presented to ESX Server. After a Rescan operation, the LUN does not show up. Other LUNs from the same storage array are visible. Which of the following could be the cause? (Choose Two)

- A. LUN masking is enabled on the ESX Server, causing LUN 6 to be ignored.
- B. Zoning is not set up correctly.
- C. The HBA on the active path is shared with the service console.
- D. The LUN was not presented to the correct ESX Server.

**Answer: AD**

74. Click the Exhibit button.

< The picture is at the bottom of document.>

The exhibit shows paths of a SAN LUN.

What is the LUN name (also known as canonical path or vmhbaC:T:L) of that LUN? A.

vmhba2:2:0

B. vmhba3:0:0

- C. vmhba2:3:0
- D. vmhba3:1:0

**Answer: B**

75. A new LUN has been presented to ESX Servers A and B. A new VMFS-3 volume is created on the LUN using a VI Client attached to ESX Server A. The new datastore is visible on ESX Server A, but not on ESX Server B. What steps must be taken to make the datastore visible to ESX Server B?

- A. Modify LUN masking settings on shared storage array
- B. perform a Rescan operation on ESX Server B
- C. reboot ESX Server B
- D. Modify LUN masking settings on ESX Server B

**Answer: B**

76. What are two benefits of Virtual Compatibility Mode for RDMS? (Choose Two) A.

- provides virtual-to-physical clustering capability
- B. provides advanced file locking for data protection
- C. passes native SCSI commands to underlying hardware
- D. provides snapshot capability

**Answer: BD**

77. What file systems will be mounted under /vmfs/volumes?

- A. all partitions listed in the /etc/fstab
- B. all partitions that have a VMFS file system
- C. all partitions not allocated to the Service console
- D. all partitions allocated to the VMkernel

**Answer: B**

78. Virtual disks in VMFS-3 volumes can be which two of the following? (Choose Two) A.

- a set of files
- B. a single file with a quorum file
- C. a single file
- D. a set of files accompanied by quorum files

**Answer: AC**

79. Which version of NFS does ESX Server 3.x require?

- A. version 2 over TCP
- B. version 3 over TCP
- C. version 3 over UDP
- D. version 2 over UDP

**Answer: B**

80. Before configuring NFS on ESX Server, what must be configured?

- A. the NFS Client service must be enabled in the Security Profile
- B. the NFS Client must be enabled from the Service Console
- C. a Service Console port
- D. a VMkernel port

**Answer: D**

81. What is the default virtual machine delegate user for NFS storage?

- A. the user currently logged into the VI Client
- B. root
- C. vpxuser
- D. nfs

**Answer: B**

82. Which parameters are required when creating an NFS-based datastore in ESX Server?

- A. NFS server World Wide Node Name, NFS shared folder name, datastore name
- B. NFS server LUN UUID, NFS shared folder name, datastore name
- C. NFS server CHAP, NFS shared folder name, datastore name
- D. NFS server hostname, NFS shared folder name, datastore name

**Answer: D**

83. Which statement is true about running virtual machines on NAS storage? (Choose Two)

- A. The NAS fileshare must use NFS
- B. Virtual machines cannot be placed on NAS storage
- C. The RDM for a virtual machine (if used) cannot reside on the NAS fileshare
- D. RDMs residing on a NAS fileshare must be placed in physical compatibility mode

**Answer: AC**

84. The Challenge Handshake Authentication Protocol (CHAP) is used with iSCSI on an ESX Server to provide which of the following?

- A. Bi-directional Target authentication
- B. Storage Processor authentication
- C. LUN Group authentication
- D. Initiator authentication

**Answer: D**

85. In ESX3.5, which of the following is a valid software iSCSI initiator? A.

- vmhba32
- B. iscsi0
- C. vmnic1



D. vmhba2

**Answer: A**

86. Which of the following statements are true about software iSCSI? (Choose Two) A.

SendTargets can be configured.

B. CHAP authentication can be configured.

C. It is enabled by default.

D. It requires a dedicated NIC.

**Answer: AB**

87. Which of the following methods can be used to secure access to iSCSI storage when using ESX server? (Choose Two)

A. Enable CHAP authentication

B. Disable promiscuous mode for the virtual switch containing the vmkernel port used for iSCSI

C. Enable encryption on iSCSI initiator by selecting the iSCSIencrypt option

D. Place virtual machines and the vmkernel port used for iSCSI on separate virtual switches

**Answer: AD**

88. In a VI 3 environment, iSCSI dynamic discovery (Choose Two) A.

uses "get target" requests.

B. is the only discovery option available for iSCSI software initiators. C.

is used along with static discovery on iSCSI software initiators.

D. uses "send target" requests.

**Answer: BD**

89. What is the default port used by iSCSI on VMware Infrastructure? A.

443

B. 3260

C. 902

D. 2049

**Answer: B**

90. When setting up the iSCSI software initiator on an ESX Server, which virtual switch port types are required? (Choose Two)

A. virtual machine

B. VMkernel

C. Service Console

D. iSCSI

**Answer: BC**

91. Which network technology does ESX Server require to transfer iSCSI commands?

- A. IPX
- B. TCP
- C. UDP
- D. SNMP

**Answer: B**

92. VirtualCenter 2.X supports which two database products for production use? (Choose Two)

- A. Microsoft SQL Server
- B. Microsoft Access
- C. MySQL
- D. Oracle

**Answer: AD**

93. VirtualCenter 2.X supports which two database products for production use? (Choose Two)

- A. Microsoft Access
- B. Oracle
- C. MySQL
- D. Microsoft SQL Server

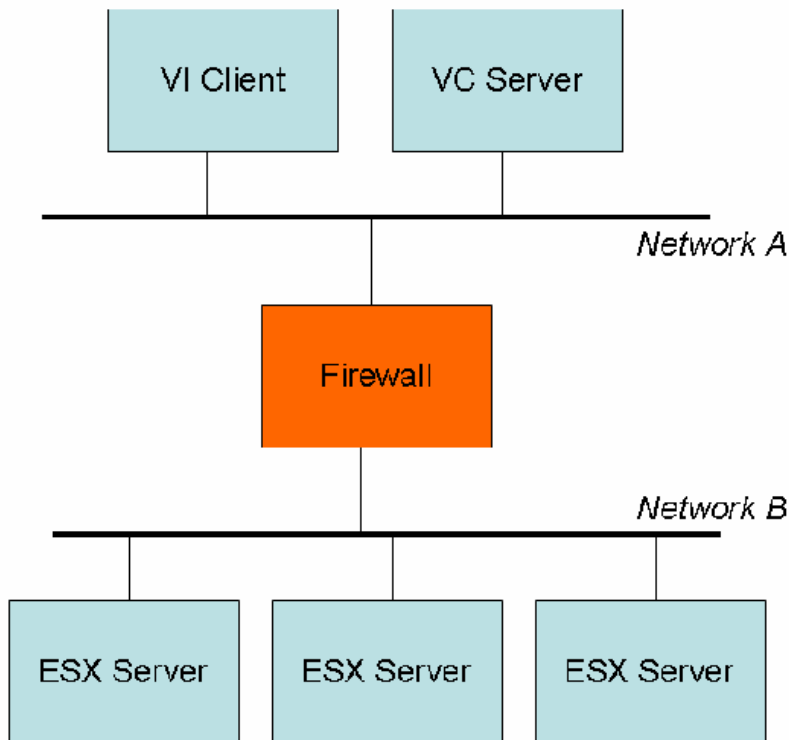
**Answer: BD**

94. Assuming a user has appropriate privileges, the Virtual Infrastructure Web Access client can be used to perform which of the following tasks? (Choose Three)

- A. change the virtual hardware configuration of a virtual machine
- B. add a virtual switch to the Virtual Infrastructure
- C. access the Remote Console of the virtual machine
- D. view an inventory of the virtual machines in the Virtual Infrastructure
- E. add a virtual machine to a DRS cluster

**Answer: ACD**

95. Click the Exhibit button.



A company deploys a Virtual Infrastructure with 3 ESX hosts and VirtualCenter using host-based licensing. The VirtualCenter server and the Virtual Infrastructure client are on network A. The ESX Server hosts are on network B. There is a firewall between networks A and B.

Which ports, at a minimum, need to be open on the firewall to allow full use of the Virtual Infrastructure client?

- A. Port 902 and 905
- B. Ports 902, 27000, and 27010
- C. Ports 443 and 902
- D. Ports 902 and 903

**Answer: D**

96. What is the minimum supported hardware requirement to run VirtualCenter Server? A.

150 MB free disk space

B. 2 GHz CPU

C. connectivity to the storage volume containing templates

D. 512 MB RAM unless running a database server on the same machine

**Answer: B**

97. Using the VI Client, which of the following actions can be scheduled through the New Task Wizard?  
(Choose Two)

- A. Adding hardware to a virtual machine
- B. Migrate a virtual machine with VMotion
- C. Delete a virtual machine
- D. Create a virtual machine template

**Answer: BD**

98. Which statement is true about the database used for VirtualCenter evaluations?

- A. The VirtualCenter installer provides the option to automatically install and configure an MSDE database.
- B. MS Access may be used as an evaluation database, but it must be upgraded before VirtualCenter is used in a production environment.
- C. Evaluation licenses do not allow VirtualCenter to connect to a remote database.
- D. The optional MSDE database can only be used if installed prior to running the VirtualCenter installer.

**Answer: A**

99. You have decided to install VirtualCenter on an existing Windows Server running an application that is accessed through standard HTTP and HTTPS connections, ports 80 and 443.

What will you need to do in order to successfully deploy VirtualCenter?

- A. You must specify alternate VirtualCenter Web Service ports during installation and manually specify the alternate ports when connecting with the Virtual Infrastructure Client.
- B. No additional action is required
- C. You must change the VirtualCenter Web Service port to 905 if SDK clients will be used.
- D. You must move the application to another server but keep IIS installed and running on ports 80 and 443 for use with SDK clients.

**Answer: A**

100. Which of the following must be obtained from the database administrator that manages the remote SQL Server that VirtualCenter will use? (Choose Two)

- A. password for the SA account on the database
- B. SQL Server login and password with appropriate rights to the VirtualCenter database
- C. SQL Server name and database name of a new, empty database to be used by VirtualCenter
- D. SQL Server name only (the database for VirtualCenter will be automatically created during installation)

**Answer: BC**

101. Of the following choices, what is the minimum version of Windows supported to run VirtualCenter?

- A. Windows 2000 Server, SP4 with Update Rollup 1
- B. Windows XP Professional SP2
- C. Windows Server 2003

D. Windows Server 2003 SP1

**Answer: B**

102. Under which condition does VMware support VirtualCenter with SQL Server using Windows authentication?

- A. the SQL Server is part of the same Active Directory domain
- B. the SQL Server must run on a physical machine
- C. the SQL Server is installed on the same machine as VirtualCenter
- D. the connection between VirtualCenter and SQL Server is at least 1Gbps

**Answer: C**

103. What is required for VirtualCenter to run inside a virtual machine (VM)? A.

- 2 GB physical RAM available to the VM
- B. 1000MHz CPU Reservation for the VM
- C. The virtual machine virtual disk file must reside on a SAN
- D. Virtual SMP license for the host running the VM

**Answer: A**

104. Which statement is true about VirtualCenter and the License Server?

- A. If deploying a License Server is not desirable, VirtualCenter can be installed using a host-based license file.
- B. VirtualCenter cannot be installed without an operational License Server online.
- C. The License Server must be installed during VirtualCenter installation and must always run on the same server as VirtualCenter.
- D. The License Server may be installed on a separate machine, but VirtualCenter requires a server-based license.

**Answer: D**

105. While verifying host connectivity to datastores using Topology Maps, you see that one of the hosts in a DRS/HA Cluster has a red X. What does this indicate?

- A. The host has failed as part of an HA event
- B. The host is not compatible for VMotion migration
- C. The host cannot access the selected datastore
- D. The host cannot be contacted to update the Topology Map

**Answer: B**

106. Plugins allow access to external applications. To enable a plugin, which of the following steps must have already been completed?

- A. The client component of the application to be used by the plugin must be installed
- B. The plugin must be downloaded and installed

- C. The plugin must be installed using Add/Remove programs on the VirtualCenter Server
- D. The plugin must be selected when VirtualCenter is installed

**Answer: B**

107. Which of the following Advanced Boot Options can be configured from the options tab of a Virtual Machine? (Choose Two)

- A. Change the boot order
- B. Select a script to execute on boot up
- C. Select the Force BIOS Setup option
- D. Specify a boot delay in milliseconds

**Answer: CD**

108. Which of the following capabilities exists in Virtual Center 2.5? A.

Virtual machines can exist on a DRS cluster across datacenters.

- B. Virtual Machines in one datacenter can be cloned to another datacenter
- C. Virtual machines in one datacenter can be VMotion migrated to another datacenter. D.
- Virtual machines can be failed over to another datacenter (using HA).

**Answer: B**

109. Using the OVF Tool, Virtual Machines can be converted into OVF files from which of the following VMware products? (Choose Three)

- A. VMware Workstation 6.x
- B. VMware Server 2.x
- C. VMware Fusion 1.x
- D. VMware Player 2.x
- E. VMware ESX Server 3.5

**Answer: ABC**

110. Company X wants to install Application Y in a virtualized environment. The underlying operating system has to be Windows 2003 SP1. In a physical environment, the application and supporting software have very strict minimum hardware requirements.

Which requirement(s) would prohibit the use of this application inside a virtual machine?

- A. 3 NICs and 3 SCSI adapters
- B. 4 CPUs and 4.5 GB RAM
- C. a minimum disk size of 2 TB
- D. a minimum of 4 available SCSI adapters

**Answer: A**

111. A company wants to install Application Y in a virtualized environment. The underlying operating system has to be Windows NT 4.0 SP6a. In a physical environment, the application and supporting software have

very strict minimum hardware requirements.

Which two requirements prohibit the use of an application inside a virtual machine? (Choose Two)

- A. 4 GB RAM
- B. 8 separate disks
- C. 2 CPUs
- D. 3 NICs

**Answer: AC**

112. A company wants to install Application Y in a virtualized environment. The underlying operating system has to be Windows 2000 SP4. In a physical environment, the application and supporting software have very strict minimum hardware requirements.

Which requirement prohibits the use of the application inside a virtual machine? A.

- A. 8 GB RAM
- B. 4 CD-ROM drives
- C. 2 parallel ports
- D. 5 NICs

**Answer: D**

113. What are two benefits that result from creating new virtual machines (VMs) using templates? (Choose Two)

- A. faster deployment
- B. standardized base images
- C. less disk space used in the resulting VM
- D. easier to upgrade and manage multiple VMs

**Answer: AB**

114. On the DRS cluster, which three steps are part of the process in creating a virtual machine (VM) in VirtualCenter 2.x? (Choose Three)

- A. choose whether you are creating a Typical or Custom VM
- B. select the resource pool in which you want to run the VM
- C. select the group folder within the server farm in which you want the VM to reside
- D. connect the CD-ROM drive to your OS disk image
- E. select a datastore in which to store the VM files

**Answer: ABE**

115. On the DRS cluster, which three steps are part of the process in creating a virtual machine (VM) from a template in VirtualCenter 2.x? (Choose Three)

- A. choose the number of processors the new VM will use
- B. decide whether or not to customize the guest operating system

- C. determine if the VM will deploy to a virtual disk or a raw LUN
- D. choose a resource pool for the new VM
- E. select the datacenter that contains the template

**Answer:** BDE

116. Which two steps are required when adding an existing virtual disk to a NT 4.0 virtual machine (VM)?  
(Choose Two)

- A. select existing virtual disk for storage
- B. power off the VM
- C. select a location for the virtual disk
- D. specify the virtual device node

**Answer:** AD

117. What information must be specified when adding a mapped SAN LUN to a virtual machine (VM)?  
(Choose Two)

- A. the virtual device node
- B. the location of the device driver for the LUN
- C. the compatibility mode
- D. the amount of space on the LUN to be made available to the VM

**Answer:** AC

118. Which statement is true about virtual machines (VMs) with SCSI Bus Sharing set to virtual mode?

- A. Virtual disks cannot be shared by other VMs.
- B. Virtual disks can be shared by VMs on the same server.
- C. Virtual disks must reside on a VMFS volume that is in shared mode.
- D. Virtual disks can be shared by VMs on any server.

**Answer:** B

119. Which statement is true about virtual machines (VMs) with SCSI Bus Sharing set to physical mode?

- A. Virtual disks must reside on a VMFS volume that is in shared mode.
- B. Virtual disks can be shared by VMs on the same server.
- C. Virtual disks cannot be shared by other VMs.
- D. Virtual disks can be shared by VMs on any server.

**Answer:** D

120. What is a characteristic of a mapped SAN LUN set to Physical Compatibility mode? A.

- A. allows the LUN to be made into a template
- B. allows the guest operating system to access the hardware directly
- C. allows the virtual machine to use VMware snapshots
- D. allows the VMkernel to natively access NTFS data on the LUN



**Answer: B**

121. What is a characteristic of a mapped SAN LUN set to Virtual Compatibility mode? A.

allows the virtual machine to use VMware snapshots

B. allows the guest operating system to access the hardware directly

C. allows the VMkernel to natively access NTFS data on the LUN

D. allows the use of SAN-aware applications within a virtual machine

**Answer: A**

122. Which of the following methods is not supported for importing a VMware OVF file from within ESX 3.5 or Virtual Center 2.5?

A. Import by URL

B. Import by Virtual Appliance Marketplace

C. Import by file location

D. Import by FTP

**Answer: D**

123. In release 3.5 of the Virtual Infrastructure in order to reach the BIOS in a Virtual Machine: (Choose Two):

A. The System Administrator can force the Virtual Machine to boot into the BIOS by changing a Virtual Machine property.

B. The System Administrator can manually edit the .NVRAM file in the Virtual Machine's home directory.

C. The System Administrator can edit the .vmx settings for the Virtual Machine

D. The System Administration must send a Ctl-Alt-Del to the Virtual Machine and then hit F2 as the Virtual Machine reboots.

**Answer: AD**

124. VMware Enterprise Converter can export virtual machines managed by Virtual Center to all of the following destinations except:

A. VMware ESX 2.5 managed by VMWare Virtual Center 1.4

B. VMware Server 1.x

C. VMware ESX 3.x (Including ESX Server 3i) standalone

D. VMware Workstation 4.5/5.x/6.x

**Answer: A**

125. For a successful migration with VMotion between ESX Servers, the servers must have \_\_\_\_\_.

(Choose Three)

A. compatible CPUs

B. access to same physical LANs

C. identical CPU stepping

# Cheapestinside

---

- D. consistently labeled networks
- E. identical clock speed

**Answer:** ABD

126. What can you do to minimize the downtime to the virtual machines (VMs) when taking an ESX Server down for maintenance?

- A. suspend VMs to preserve state information
- B. migrate the VMs with VMotion
- C. migrate the VMs to a different datastore
- D. create a clone of the VM

**Answer:** B

127. You can perform a migration with VMotion on virtual machines with disks on \_\_\_\_\_. A.

- iSCSI, NAS and Fibre Channel SAN-based datastores
- B. NAS and Fibre Channel SAN-based datastores only
- C. Fibre Channel-SAN based datastores only
- D. iSCSI and Fibre Channel SAN based datastores only

**Answer:** A

128. You have a mixture of servers in your datacenter where the CPUs are compatible in every way except that some support NX or XD bit and some do not.

What should you do to minimize the effect of these differences?

- A. You mask the NX/XD bits on the servers that support the functionality.
- B. You mask the NX/XD bits on the virtual machines before you VMotion them. C.  
You mask the NX/XD bits on the servers that do not support the functionality.
- D. No action is required, as NX/XD bits are masked by default.

**Answer:** A

129. Which of the following operating systems does VMware Enterprise Converter support? (Choose

Three)

- A. Windows NT 4 SP4+
- B. Windows 2003 Standard/Web/Enterprise
- C. Windows 98
- D. Red Hat Enterprise Linux (RHEL) 4
- E. Windows 2000 Professional/Server/Advanced

**Answer:** ABE

130. Which of the following system images is not a supported import option for VMware Enterprise Converter?

- A. VMware Consolidated Backup (VCB) full backup images
-



- B. Symantec Ghost 8 (.gho)
- C. Acronis True Image 9/10 (.tib)
- D. Symantec Ghost 9/10/12 (.sv2i)

**Answer: B**

131. What is the minimum amount of RAM required on a physical machine running the VMware Converter Enterprise Boot CD?

- A. 128 MB
- B. 136 MB
- C. 256 MB
- D. 264 MB

**Answer: D**

132. VMware Converter Enterprise allows the following type of conversions (Choose Three):

- A. Physical to Virtual
- B. Virtual to Virtual
- C. Physical to Disk Image
- D. Virtual to Physical
- E. Disk Image to Virtual

**Answer: ABE**

133. VMware Converter Enterprise supports the following types of cloning (Choose Two):

- A. Imaged
- B. Remote
- C. Staged
- D. Local

**Answer: BD**

134. What versions of Microsoft Windows can the VMware Converter client be installed on (Choose Three)?

- A. Windows 2003 SP1
- B. Windows XP SP2
- C. Windows 2000 Pro SP3
- D. Windows NT 4 SP4
- E. Windows Vista Enterprise

**Answer: ABE**

135. VMware Converter Enterprise requires the following TCP ports to be open: A.

- 139, 443, 902
- B. 139, 902, 905

- C. 139, 443, 445
- D. 443, 902, 905

**Answer: C**

136. VMware Converter Enterprise supports the following types of volume-based cloning (Choose Two):

- A. LVM Volumes
- B. Basic Volumes
- C. Raw Volumes
- D. Dynamic Volumes

**Answer: BD**

137. Which of the following indicates how suitable an analyzed system is for Guided Consolidation?

- A. Confidence Metric
- B. Performance Factor
- C. Suitability Metric
- D. Consolidation Factor

**Answer: A**

138. Guided consolidation shows you the following information after a successful analysis (Choose Three):

- A. Machine Name
- B. CPU Type
- C. System Model
- D. Memory info and usage
- E. CPU Usage

**Answer: ADE**

139. Guided consolidation allows you to perform the following tasks (Choose Three): A.

- Discover physical systems in your datacenter
- B. Import performance information from a 3rd party tool for analysis
- C. Analyze physical systems to determine performance characteristics
- D. Consolidate physical systems by converting them to Virtual Machines
- E. Gain an inventory of all model types of physical systems in your datacenter

**Answer: ACD**

140. What is the maximum number of systems guided consolidation can simultaneously analyze?

- A. 500
- B. 1000
- C. 250
- D. 100

**Answer: D**

141. Which of the following is true about Guided Consolidation?

- A. Records statistics for 36 hours before recommending with high confidence initial placement of VMs
- B. Utilizes a subset of the metrics defined in the VMware Capacity Planner product
- C. Helps enterprise environments with 500 or more servers plan their initial virtualization strategy
- D. Analyzes multiple domains simultaneously to determine virtualization targets

**Answer: A**

142. On an ESX Server, a particular user is assigned the Administrator role. However, when that user logs into the VirtualCenter Server, he has Read Only rights.

What most likely caused this?

- A. The rights assigned on the ESX Server will not update in VirtualCenter until the next scheduled update interval.
- B. The user has Read Only rights specifically assigned to an item, which overrides propagated rights.
- C. The ESX Server is not joined to the Active Directory domain.
- D. ESX Server roles do not propagate to the VirtualCenter Server.

**Answer: D**

143. The QA department wants to manage their own virtual machines (VMs). They share an ESX Server cluster with the HR department, and the Finance department.

What is the appropriate role for the QA department members?

- A. Administrator on the VM object
- B. Resource Pool Administrator
- C. VM Administrator
- D. Datacenter Administrator

**Answer: B**

144. Which three VirtualCenter roles, by default, have permission to create an alarm? (Choose Three)

- A. Virtual Machine Administrator
- B. Virtual Machine Power User
- C. Virtual Center Resource Administrator
- D. Datacenter Administrator
- E. Resource Pool Administrator

**Answer: ADE**

145. Which pre-defined role can assign permissions to users?

- A. Datacenter Administrator
- B. Virtual Machine Administrator
- C. Virtual Machine User
- D. Administrator

**Answer: D**

146. Using VI Client logged into VirtualCenter you create a new user and assign this user Administrator privileges on an ESX Server. Which privileges will that user have on the DRS Cluster in which this ESX Server resides?

- A. No Access
- B. Virtual Machine Administrator
- C. Datacenter Administrator
- D. Administrator

**Answer: A**

147. You assign Administrator privileges on a DRS Cluster in which an ESX Server resides. You are unable to connect the Virtual Infrastructure client to the ESX Server directly.

What is a possible cause of this problem?

- A. You need Administrator privileges on the server and all of its resource pools.
- B. You did not have Administrator privileges when you assigned this permission.
- C. You must assign the Administrator role directly to the server for VirtualCenter to propagate to the ESX Server.
- D. User names and permissions are not propagated from VirtualCenter to ESX Servers.

**Answer: D**

148. Which three are ESX Server pre-defined roles? (Choose Three) A.

Virtual Machine User

- B. Read Only
- C. No Access
- D. Virtual Machine Administrator
- E. Administrator

**Answer: BCE**

149. An employee has been told by a manager to log into Virtual Infrastructure (VI) Web Access to use an accounting application that runs inside the virtual machine (VM) named finance on the ESX Server named esx1.company.com.

What procedure should the employee follow to perform this task?

- A. use the current version of Mozilla Firefox to access <https://esx1.company.com/ui/> , log in, and select the finance VM
- B. use Internet Explorer 5.5 or higher to open the URL <https://esx1.company.com/> and follow the VM access wizard
- C. use Internet Explorer 6 to access <https://esx1.company.com/ui/finance.vm>
- D. use the VI Client to access the ESX Server and open a Remote Console window (Web Access is only for

system administration of the ESX Server)

**Answer: A**

150. In order to power on and operate a Windows XP virtual machine (VM), an end user must be able to send the key combination ?control-alt-delete? to log into the OS.

What is true about using Virtual Infrastructure (VI) Web Access with a Windows XP virtual machine?

- A. A Linux client can access the VM but first a control-alt-insert command must be sent from the VI Client.
- B. This VM can only be used from a Windows client because Linux clients cannot send control-alt-delete.
- C. VI Web Access is only intended for system administration of ESX Servers, but does allow end users to download and install the VI Client to manage Windows XP VMs.
- D. VI Web Access can be used to operate this VM from any supported Windows or Linux client.

**Answer: D**

151. For what reason would an ESX Server administrator send an end user a remote console URL?

- A. for quick access to a specific virtual machine from the Virtual Infrastructure (VI) Client
- B. to go directly to the state of a specific virtual machine snapshot that can be resumed by the end user with a Virtual Infrastructure (VI) Client
- C. to provide a lightweight user interface to a virtual machine without a Virtual Infrastructure (VI) Client
- D. because remote console URLs are used to delegate administrative tasks performed on the ESX service console

**Answer: C**

152. What is true about the installation of Virtual Infrastructure (VI) Web Access? A.

It is always installed on VirtualCenter and optional on ESX Server.

- B. It is always installed on ESX Server and VirtualCenter.
- C. It is always installed on ESX Server and optional on VirtualCenter.
- D. It is optional on both ESX Server and VirtualCenter.

**Answer: C**

153. A user has been given access to VirtualCenter using the Virtual Infrastructure (VI) Client to administer virtual machines.

What else can the user do?

- A. log on to the VirtualCenter Server and any ESX Server managed by VirtualCenter
- B. log on to the VirtualCenter Server
- C. log on to the VirtualCenter Server if an administrator grants the Permit Web Access privilege
- D. log on to any ESX Server managed by VirtualCenter

**Answer: B**

154. Which task can be performed using the Web Access Client?

- A. clone a virtual machine



- B. delete a virtual machine
- C. create a virtual machine
- D. power on a virtual machine

**Answer: D**

155. Which of the following tasks can be performed using the Web Access Client? A.

- add a VMFS datastore
- B. add a virtual disk to a virtual machine
- C. add a host to a DRS cluster
- D. create a virtual switch

**Answer: B**

156. Which two virtual machine (VM) elements are available from the VirtualCenter Web Access Console, but not the ESX Server Web Access Console? (Choose Two)

- A. VM Alarms
- B. VM Console
- C. VM Events
- D. VM Tasks

**Answer: AD**

157. Web Access can be used to monitor a virtual machine's \_\_\_\_\_. (Choose Two) A.

- memory utilization in MB
- B. disk utilization in Mbps
- C. CPU utilization in MHz
- D. network utilization in Mbps

**Answer: AC**

158. Which of the following statements are true about network traffic shaping? (Choose Two)

- A. The settings affect only outbound traffic.
- B. The settings affect inbound and outbound traffic.
- C. The settings are defined on a per port group basis.
- D. The settings affect only inbound traffic.

**Answer: AC**

159. Which is a valid traffic shaping adjustment?

- A. peak bandwidth adjusted in mbps
- B. minimum bandwidth adjusted in kbps C.
- minimum bandwidth adjusted in mbps D.
- peak bandwidth adjusted in kbps

**Answer:**  
D

160. Which is a valid traffic shaping adjustment?

- A. maximum bandwidth adjusted in mbps
- B. maximum bandwidth adjusted in kbps
- C. average bandwidth adjusted in mbps
- D. average bandwidth adjusted in kbps

**Answer: D**

161. Disk shares are applied on a(n) \_\_\_\_ basis.

- A. LUN
- B. virtual machine
- C. ESX Server
- D. virtual machine disk

**Answer: D**

162. Disk shares manage contention between multiple virtual machines on \_\_\_\_\_. A. different ESX Servers accessing any LUN

- B. the same ESX Server accessing the same LUN only
- C. different ESX Servers accessing the same LUN only
- D. the same ESX Server accessing any LUN

**Answer: B**

163. A Windows virtual machine (VM) is experiencing poor application performance. The suspected issue is a lack of available memory. Windows Task Manager shows 30% of the memory within the VM is not currently being used.

What does this indicate and what could be checked next?

- A. The application problems are definitely due to a non-memory related problem. CPU utilization should be checked next using Windows Task Manager.
- B. Windows Task Manager is not reading actual memory usage in the VM. Windows System Monitor should be used to get a precise reading on memory usage.
- C. The application problems are definitely due to a non-memory related problem. CPU affinity settings should be checked for this VM.
- D. The VM has memory available, however it may not actually have physical memory available. VMkernel swap activity on the ESX Server host should be checked next.

**Answer: D**

164. Which memory allocation technique allows physical memory to be reclaimed from virtual machine A and redistributed to virtual machine B, possibly forcing virtual machine A to swap internally?

- A. Memory Balloon Driver
- B. Transparent Page Sharing

- C. RAM Overcommit
- D. VMkernel Swap

**Answer: A**

165. Which memory conservation technique allows the secure elimination of redundant copies of memory pages between virtual machines on the host?

- A. Transparent Page Sharing
- B. VMkernel Swap
- C. RAM Overcommit
- D. Memory Balloon Driver

**Answer: A**

166. What two resource types are managed by Resource Pools? (Choose Two) A.  
host memory

- B. virtual machines' CPU
- C. virtual machines' memory
- D. host CPU

**Answer: AD**

167. What is a function of the vmmemctl driver?

- A. enables transparent page sharing
- B. allows the operation of unsupported guest OS types
- C. enables swapping of the virtual machines
- D. reclaims unused memory from the guest OS

**Answer: D**

168. Which statement is true about transparent page sharing?

- A. It is the process of collecting unused memory from the guest OS and returning it to the VMkernel.
- B. It is the method of eliminating duplicate pages of memory allocated to multiple virtual machines.
- C. It only works with supported guest OS.
- D. It only works with Windows.

**Answer: B**

169. What is the maximum number of VMkernel swap files that an ESX Server can have on a single VMFS volume?

- A. 1 per virtual machine
- B. 1
- C. VMkernel swap files must be stored locally on the ESX Server
- D. 1 per virtual disk

**Answer: A**

170. A Windows virtual machine (VM) viewed through Task Manager shows CPU utilization averaging

95-100%.

What does this indicate?

- A. The VM has an impending performance problem. The running processes in Windows Task Manager should be checked to determine what applications are consuming CPU resources.
- B. The VM CPU reservation is not sufficient.
- C. The VM has CPU affinity set to CPU 0 and is competing with the service console for CPU resources. esxtop should be run to confirm the diagnosis.
- D. The VM is utilizing most of the CPU resources allocated to it. The CPU Ready value should be checked to determine if this is a resource constraint.

**Answer: D**

171. Under which circumstance will a virtual machine always fail to power on? A.

when there is no free space in VMFS

B. when the virtual machine's memory is configured at greater than 3.6 GB C.

when the virtual machine's reservation cannot be guaranteed

D. when the host's license server became inaccessible 24 hours ago

**Answer: C**

172. The incorrect application of traffic shaping settings can affect network performance of \_\_\_\_\_.

- A. traffic only between virtual machines on different vSwitches on the same ESX Server
- B. general network traffic, including non virtual machine traffic
- C. traffic only between virtual machines on the same vSwitch
- D. traffic only between virtual machines on different vSwitches on the different ESX Servers

**Answer: B**

173. A physical Network device associated with a vSwitch is overloaded: Which of the following actions can be taken to reduce the overload? (Choose Three)

- A. move virtual machines from the affected vSwitch to other available vSwitches
- B. configure additional VLAN port groups on the same vSwitch
- C. add the VMkernel TCP/IP networking stack
- D. configure traffic shaping
- E. add an additional vmnic to the affected vSwitch

**Answer: ADE**

174. It appears that a virtual machine (VM) is having performance problems because it does not have enough CPU resources available.

Which of the following methods could be used to guarantee a VM gets 100% of a CPU on the host when it needs it? (Choose Two)

# Cheapestinside

---

- A. set CPU affinity on that virtual machine, pinning it to a CPU 1
- B. set the CPU limit for this VM to 100%
- C. set CPU affinity on that VM, pinning it to CPU 1 and set CPU affinity on all other VMs so that they specifically cannot use CPU 1
- D. set the CPU reservation for this VM to 100%

**Answer:** CD

175. A new ESX Server is set up initially with two virtual machines (VMs) for users to access. The applications will allocate all the memory that is available to them. 20 identical VMs will be installed within six months, which may lead to memory contention.

How can the first two VMs be configured so that their performance does not decrease as more VMs are added?

- A. set the memory shares so that the VMs get 10 shares per megabyte of configured memory for the VMs
- B. set a memory limit on the VMs that is a lower value than the configured memory for the VMs
- C. set a memory reservation on the VMs that is lower than 50% of the configured memory for the VMs
- D. set an expandable memory reservation on the VM that is lower than 50% of the configured memory for the VMs

**Answer:** B

176. While attempting to start a virtual machine (VM), an error message states that there is insufficient memory available.

What can be done to start the VM?

- A. decrease the memory limit of your VM
- B. decrease the memory reservation of your VM
- C. increase the memory limit of your VM
- D. increase the memory reservation of your VM

**Answer:** B

177. A virtual machine performance graph shows Memory Swap In to be at 95%. Users of the VM are complaining that performance is slow.

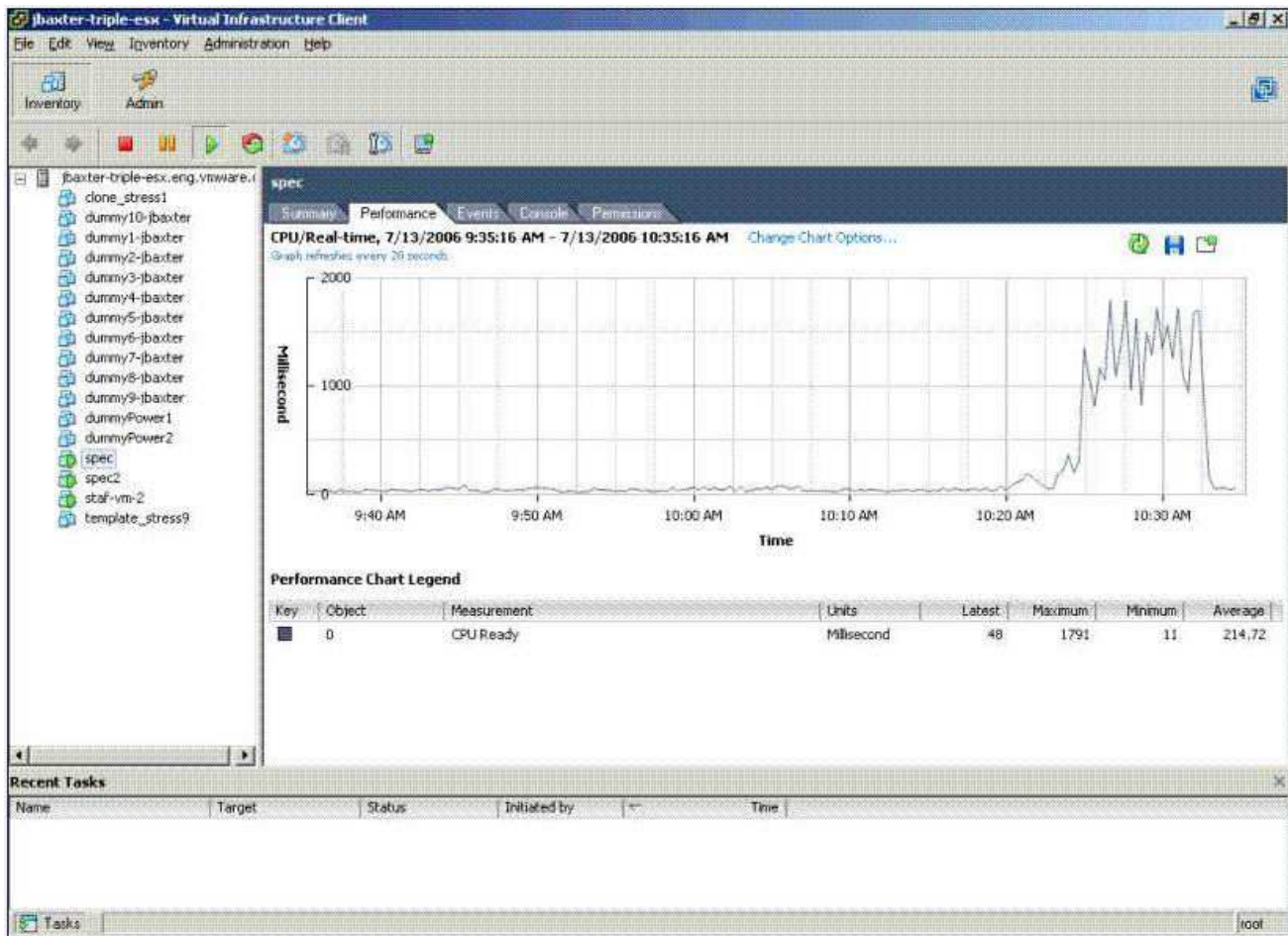
Which of the following actions can be done to increase performance of the VM? (Choose Two)

- A. decrease the memory limit of the VM
- B. increase the memory reservation of the VM
- C. move the VM using VMotion to another server
- D. decrease the memory reservation of the VM

**Answer:** BC

178. Click the Exhibit button.

# Cheaptestinside

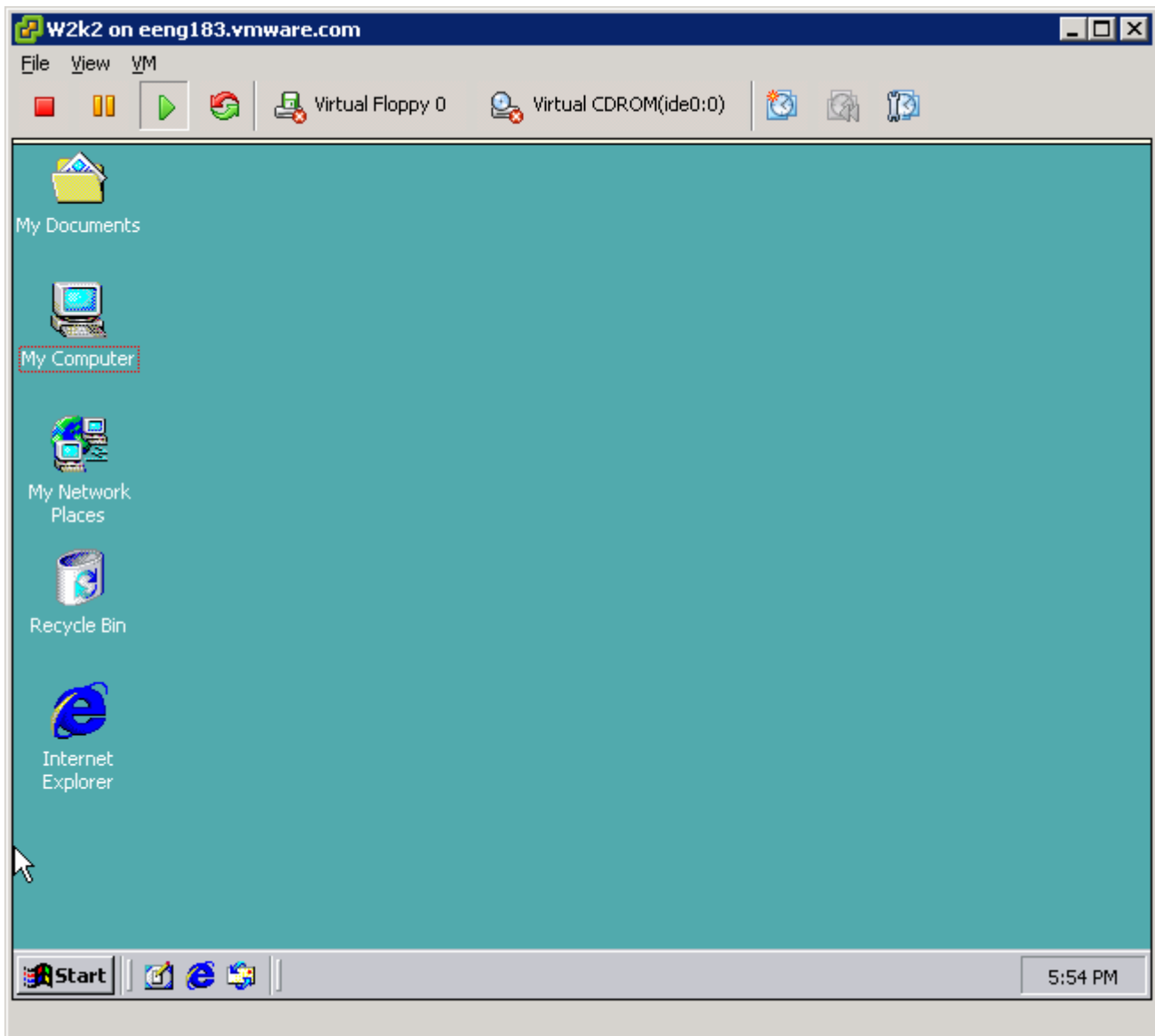


Which of the following changes would likely reduce the symptom in the performance chart shown in the exhibit? (Choose Three)

- A. increasing CPU shares
- B. increasing CPU limit
- C. resetting the CPU affinity back to the default
- D. setting CPU affinity
- E. increasing CPU reservation

**Answer:** ABE

179. Click the Exhibit button.



Which of the following steps could be taken to improve the performance of this virtual machine?

- A. Increase the memory limit of the virtual machine
- B. Install VMware Tools
- C. Traffic shape this virtual machine
- D. increase the CPU reservation on the virtual machine

**Answer: B**

180. Resource pools at the same level are called?

- A. Child Pools
- B. Parent Pools
- C. Sibling Pools
- D. Root Resource Pools

**Answer: C**

181. When adjusting the slider to allocate resources for a Resource Pool, the yellow indicator on the

resource bar indicates:

- A. The minimum required resource amount
- B. The maximum available resource amount
- C. The recommended resource amount
- D. A warning flag set at 75% of the available resource amount

**Answer: C**

182. Which of the following are benefits of using resource pools? (Choose Three) A.

improved network utilization

- B. isolation between pools, sharing within pools
- C. decreased virtualization overhead
- D. access control and delegation
- E. flexible hierarchical organization

**Answer: BDE**

183. A virtual machine (VM) residing in a resource pool is exhibiting poor performance, and appears hung. The resource pool in which it resides is limited to 500 MHz of CPU. The cluster server in which the resource pool resides has a total of 6000 MHz, with 1000 MHz available.

Which step can be used to increase the performance of the VM?

- A. increase the CPU Limit on the resource pool
- B. increase the CPU Reservations on the resource pool
- C. increase the CPU Reservations on the VM
- D. increase the CPU Limit on the VM

**Answer: A**

184. Which of the following are true about the share value for a virtual machine after it has been added to a Resource Pool?(Choose Two)

- A. If a previously defined custom share value exists, the %Shares value is maintained
- B. If a previously defined share level (high,medium,low) exists, the %Shares value is maintained
- C. If a previously defined custom share value exists, the %Shares value is adjusted to reflect the total number of shares in use in the Resource Pool
- D. If a previously defined share level (high,medium,low) exists, the %Shares value is adjusted to reflect the total number of shares in use in the Resource Pool

**Answer: AD**

185. An ESX Server in DRS cluster is placed into Maintenance Mode. Which of the following conditions are true? (Choose Two)

- A. If the DRS cluster is in partially automated mode then the Virtual Machines that have a High Restart Priority will be moved to another ESX Server.



- B. If the DRS cluster is in partially automated mode then the Virtual Center System Administrator must VMotion Virtual Machines to another ESX Server.
- C. If the DRS cluster is in fully automated mode, DRS will automatically VMotion Virtual Machines to other ESX Servers
- D. If the DRS cluster is in fully automated mode, DRS will make a migration recommendation and then VMotion Virtual Machines to other ESX servers.

**Answer: BC**

186. What is the difference between partially automated and fully automated DRS clusters?

- A. Partially automated clusters migrate virtual machines using a more conservative algorithm.
- B. Partially automated clusters are a result of a fully automated cluster becoming yellow. C. Fully automated clusters migrate virtual machines to optimize resource usage.
- D. Fully automated clusters do not take individual virtual machine rules into account.

**Answer: C**

187. Virtual Infrastructure (VI) Client shows a DRS cluster that contains a resource pool named Grafted from xyz.

What is the likely explanation for this?

- A. Another DRS cluster named xyz has used an expandable reservation to provide resources to this DRS cluster.
- B. The host named xyz has been put into Maintenance mode.
- C. Originally, the DRS cluster contained a host named xyz but it has been removed from the cluster.
- D. The host named xyz was added to the DRS cluster.

**Answer: D**

188. In a fully automated DRS cluster, what can be done to ensure a particular VM does not migrate automatically to another host?

- A. do nothing because the DRS cluster must be put in Partially Automated mode to allow this level of control
- B. set the DRS VM options for the particular VM to Partially Automated mode
- C. use the Affinity Wizard to specify Manual Automation mode
- D. set the DRS VM rule to keep on this host

**Answer: B**

189. Which of the following can be configured or modified from the Resource Allocation tab of a DRS Cluster? (Choose Two)

- A. CPU reservation for child resource pools
- B. Memory reservation for child resource pools
- C. CPU reservation for any virtual machine in the cluster

D. Fixed or Expandable Reservation Type for any virtual machine in the cluster

**Answer: CD**

190. What is the meaning of a red DRS cluster?

- A. Red clusters indicate virtual machines are using more resources than the fixed reservation allows.
- B. Yellow clusters will become red after 15 minutes if DRS is unable to dynamically balance the load.
- C. At least one host in the cluster is attempting to go into Maintenance mode.
- D. Red clusters are the highest priority and will receive resource allocations first.

**Answer: A**

191. During an attempt to create a new resource pool in a cluster, the New Resource Pool selection appears to be unavailable.

What could be the cause?

- A. The cluster has too few resources to create a new resource pool.
- B. VMware HA has not been enabled on the cluster.
- C. There are no servers in the cluster.
- D. DRS has not been enabled on the cluster.

**Answer: D**

192. DRS on a cluster is set to Fully Automated mode. One server in the cluster is running at 98% CPU utilization. Upon analysis, it appears that none of the virtual machines (VMs) are being migrated to other servers. Which of the following are the most likely causes of the problem? (Choose Two)

- A. The guest OS types for the VMs do not support DRS.
- B. All of the VMs on the affected server are set to Manual mode.
- C. An Affinity Rule for the affected VMs has been set to Separate Virtual Machine for the VMs on the overloaded host.
- D. An underlying VMotion technical issue is preventing the Virtual Machines from being migrated to other ESX Servers in the cluster.

**Answer: BD**

193. Cluster Resources could be monitored using \_\_\_\_\_ .

- A. esxtop
- B. Web Access
- C. Virtual Infrastructure (VI) Client connecting to VC Server
- D. Virtual Infrastructure (VI) Client connecting to ESX Server

**Answer: C**

194. A user's permission set is modified so that they can no longer create alarms.

What will happen to the alarms already created by this user?

- A. Alarms will never be triggered.

# Cheapestinside

- B. Only ESX host alarms will be triggered.
- C. Alarms will be triggered for critical state changes only.
- D. Alarms will be triggered if the event occurs.

**Answer: D**

195. A user wants to receive an email notification when the virtual machine CPU usage enters a critical state, and again when the problem has been resolved. Which two state changes must be chosen to receive the appropriate notifications? (Choose Two)

- A. red-green state change
- B. yellow-green state change
- C. green-yellow state change
- D. yellow-red state change

**Answer: BD**

196. Which of the following are valid choices for optimizing performance of Virtual Machines? (Choose Three)

- A. Disable unused devices such as COM ports, Floppy drives, and CD ROM drive.
- B. Keep virtual machines that have similar resource requirements on the same host. C. Avoid installing vmware-tools on resource intensive virtual machines.
- D. Defragment attached VMFS-3 volumes.
- E. Tune and size virtual machine operating systems as you would on physical hosts.

**Answer: ABE**

197. Click the Exhibit button.

The screenshot shows the VMware vSphere interface for a virtual machine named 'Finance'. The 'Summary' tab is selected, displaying various resource allocation and performance metrics.

General	
Number of Virtual Machines:	1
Number of Running Virtual Machines:	0
Number of Child Resource Pools:	0

Resources	
CPU usage:	20 MHz
Memory usage:	57 MB

CPU	
Shares:	Normal (4000)
Reservation:	0 MHz
Type:	Expandable
Limit:	Unlimited
Unreserved:	9496 MHz

Memory	
Shares:	Normal (163840)
Reservation:	0 MB
Type:	Expandable
Limit:	Unlimited
Unreserved:	3009 MB

Commands	
	New Virtual Machine
	New Resource Pool
	Edit Settings

# Cheapestinside

---

Assuming this is the only virtual machine, and the only resource pool, what is the maximum amount of memory that could be assigned to the virtual machine that is part of the Finance Resource Pool?

- A. 57 MB
- B. 160831 MB
- C. 3009 MB
- D. 163840 MB

**Answer: D**

198. Which is a valid reason NOT to set CPU affinity on a single VM?

- A. A virtual machine with CPU affinity might not receive all of its reserved CPU resources.
- B. CPU affinity settings are ignored when using VMotion.
- C. Setting CPU affinity will monopolize a CPU making it unusable for other VMs on the server. D.
- D. CPU affinity can only be set on hyperthreaded systems.

**Answer: A**

199. Which of these factors indicates a high likelihood that a virtual machine's performance is being constrained by disk I/O?

- A. A large number of kilobytes read and written
- B. A large number of disk shares
- C. A large number of virtual disks on its SCSI bus
- D. A long SCSI queue length

**Answer: D**

200. Which of the following ESX Server memory conservation techniques will always have the LEAST

negative effect on the performance of a running VM?

- A. use of the .vswp file
- B. Transparent Page Sharing
- C. vmmemctl
- D. lowering the Reservation variable

**Answer: B**

201. What must a system administrator do to enable monitoring of a VM heartbeat with supported third-party SNMP monitoring tools?

- A. install vmware-tools
- B. purchase a VMware-aware version of the SNMP monitoring tool
- C. purchase a separate SNMP license from VMware
- D. import VMware MIBs

**Answer: D**

202. Which of the following resource management techniques could be used to relieve a network

---



# Cheaptestinside

bottleneck experienced by a VM?

- A. adjust the minimum value for the physical NIC interface
- B. create a vmxnet virtual switch
- C. change the number of network shares
- D. apply traffic shaping to limit bandwidth for other VMs

**Answer: D**

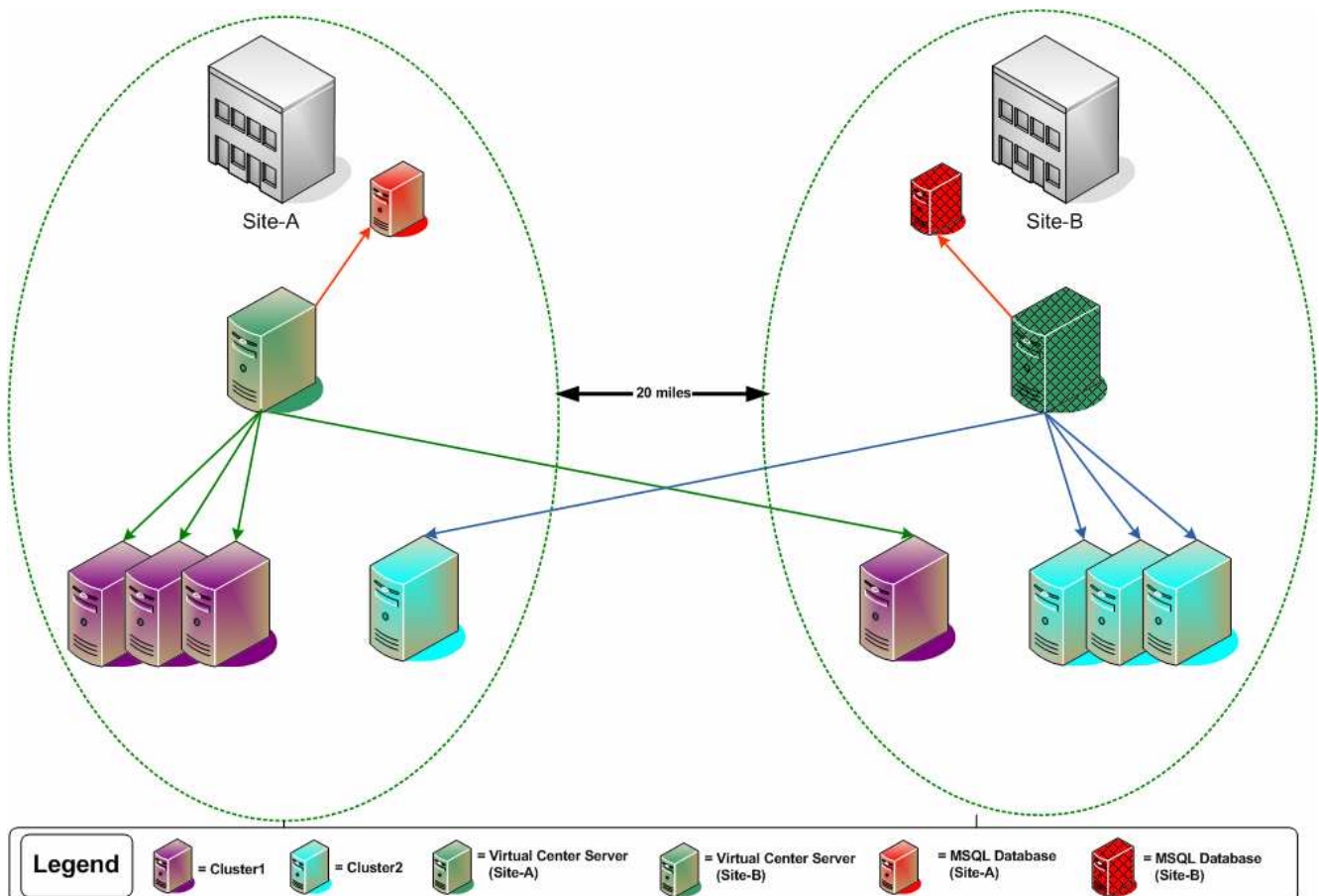
203. What will most benefit a CPU-constrained VM?

- A. the installation of a third-party management tool in the guest OS
- B. a decrease in the CPU-limit value
- C. the installation of the vmxnet virtual adapter
- D. an increase in CPU shares

**Answer: D**

-----Exhibit-----

1

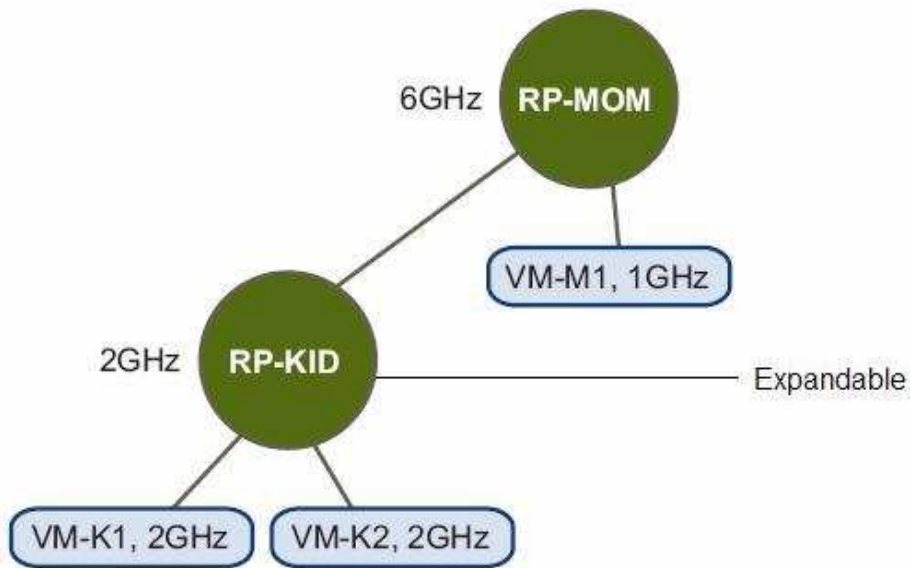


2

# Cheaptestinside

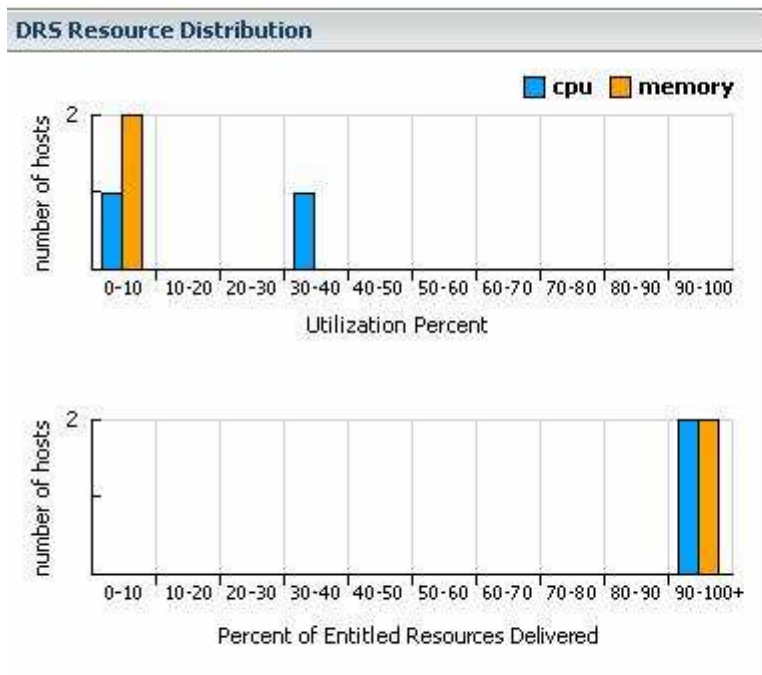
RP = Resource Pool

VM = Virtual Machine



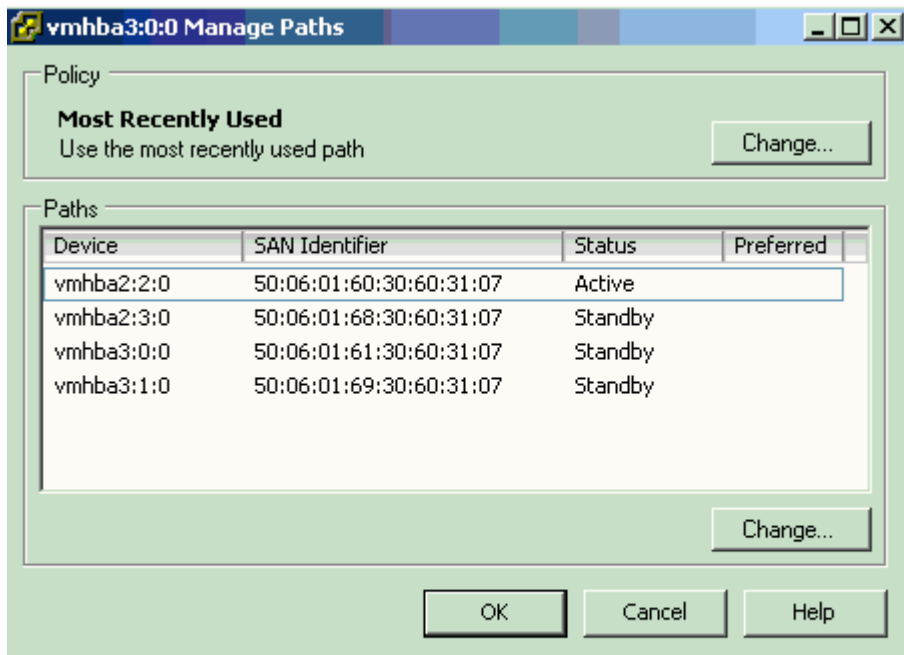
Admission Control with Expandable Resource Pools

3



4

# Cheaptestinside







# Cheaptestinside

Cheaptestinside.com was founded in 2006. The safer,easier way to help you pass any IT Certification exams . We provide high quality IT Certification exams practice questions and answers(Q&A). Especially [Adobe](#), [Apple](#), [Citrix](#), [Comptia](#), [EMC](#), [HP](#), [Juniper](#), [LPI](#), [Nortel](#), [Oracle](#), [SUN](#), [Vmware](#) and so on. And help you pass any IT Certification exams at the first try.

You can reach us at any of the email addresses listed below.

English Customer: [Sales\(at\)Cheaptestinside.Com](mailto:Sales(at)Cheaptestinside.Com)

English Version <http://www.Cheaptestinside.com>